

Positions through Contextualising

Recap



NEW
CONSERVATORIES

Reference

“‘Public’ [space], in this instance, is understood to mean common ground, an open and shared zone of collective dignity. It is related to democracy, in that it is not dictatorial or pre-determined from above, but produced by the people who comprise it...The concrete manifestation sits at the intersection of complex social and cultural systems. It is architecture which allows these factors to be embodied in space, and to be reproduced over time.”

—The Social (Re)Production of Architecture: Politics, Values and Actions in Contemporary Practice

Line of Inquiry

Architecture in public spaces is the material embodiment of the social relations it facilitates (Petrescu and Trogal, 2017). Focusing on the fundamental element of typography, I adapt architectural structures from public spaces into the anatomy of letterforms, recontextualising types as two-dimensional translations of three-dimensional spaces, in which social relations of the analogue world are generated and sustained. These architectural features are abstracted into modular components distributed through a grid system to form new glyphs, proposing letterforms as composite structures formed from flexible segments shaped by, and continuously interacting with, the spatial and material conditions of their surroundings.

By linking architectural and typographic structures, my question is: **can a letter function as a two-dimensional public space that facilitates and reproduces social connections?**

Initial Idea

Greek Alphabet

**A α, B β, Γ γ, Δ δ, Ε ε, Ζ ζ, Η η, Θ θ, Ι ι, Κ κ, Λ λ, Μ μ,
Ν ν, Ξ ξ, Ο ο, Π π, Ρ ρ, Σ σ ς, Τ τ, Υ υ, Φ φ, Χ χ, Ψ ψ, Ω ω**

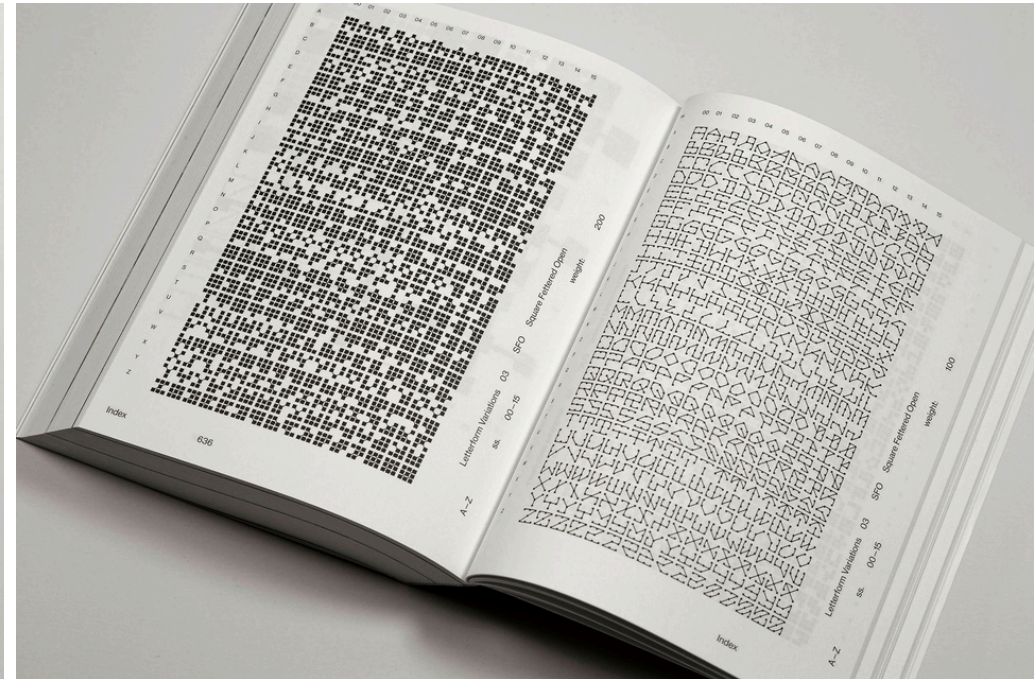
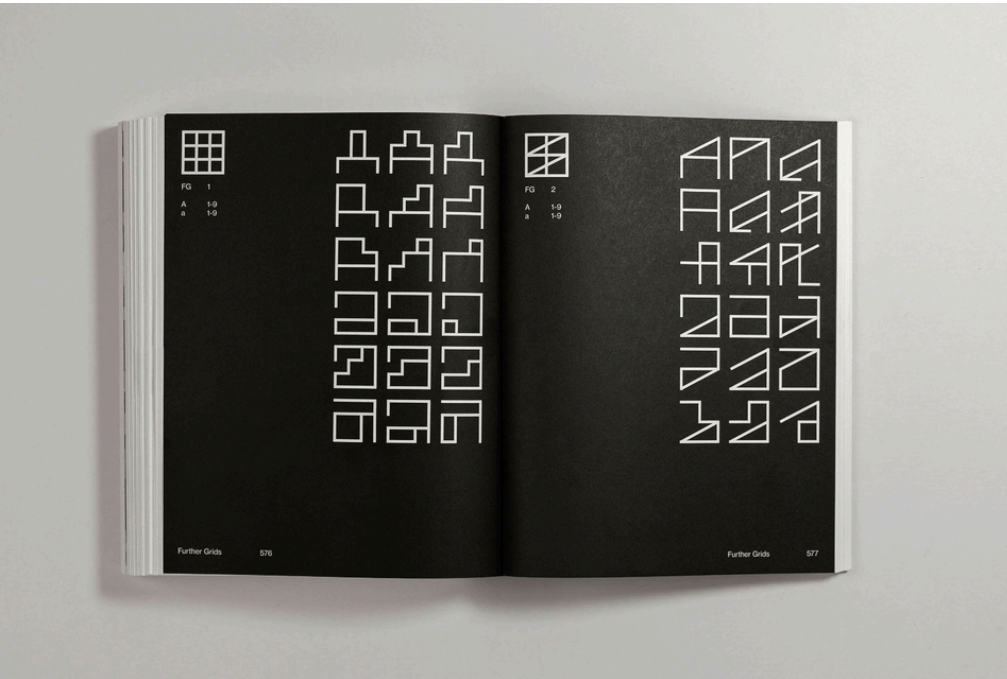
24 letters

English Alphabet

**A a, B b, C c, D d, E e, F f, G g, H h, I i, J j, K k, L l, M m,
N n, O o, P p, Q q, R r, S s, T t, U u, V v, W w, X x, Y y, Z z**

26 letters

Reference

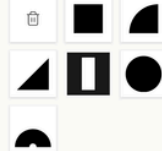


Cottier, N. (2021) Letterform Variations. Karlsruhe: Slanted Publishers.

FLEXIBLE TYPEFACE

MODULAR SYSTEM / V1.0.0

MODULES



PROPERTIES



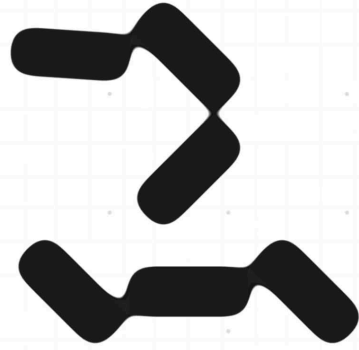
SAVE TO ARCHIVE

EXPORT PNG

RESET

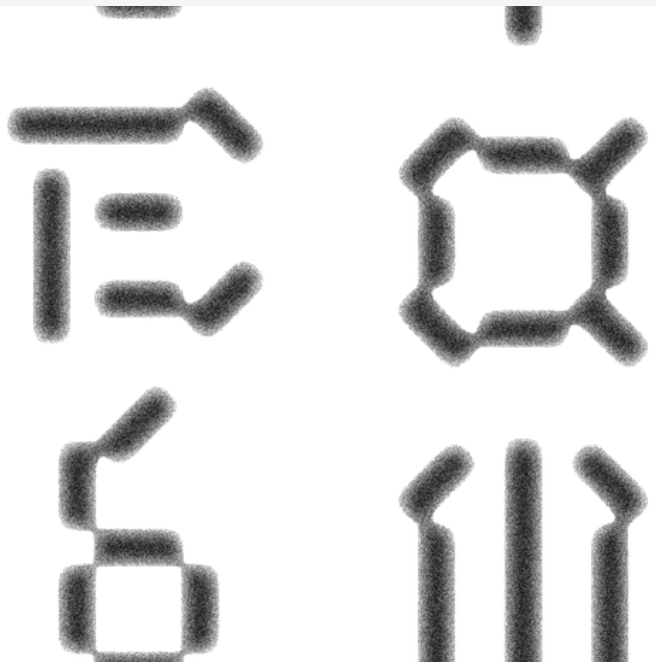
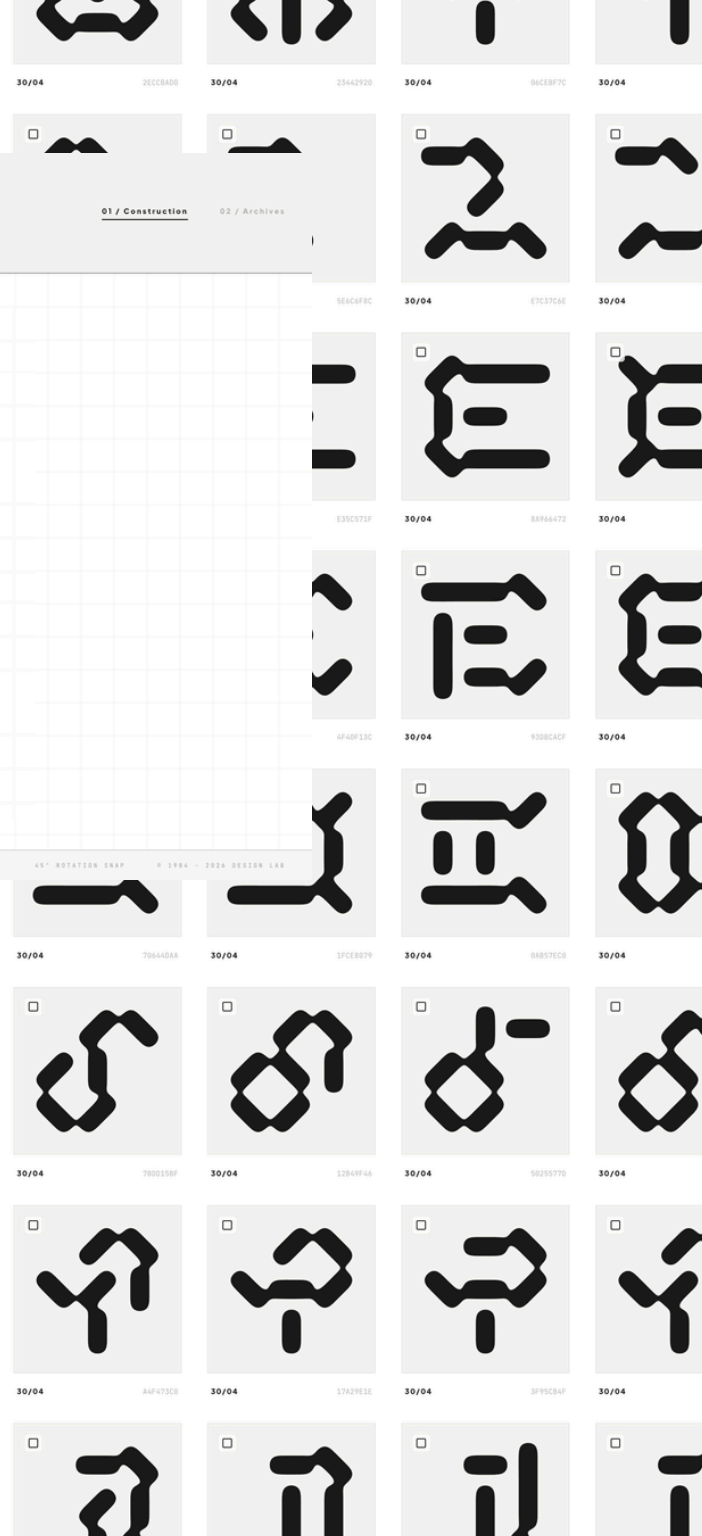
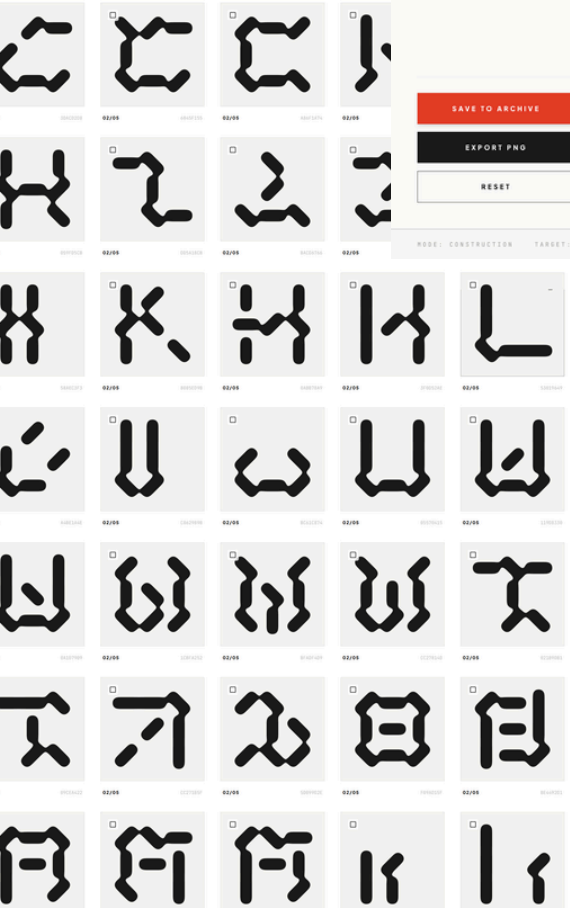
MODE: CONSTRUCTION TARGET: DOT_MATRIX

01 / Construction 02 / Archives



COLLECTION ARCHIVE

10 MODULES AND CONSTRUCTED OUTPUTS



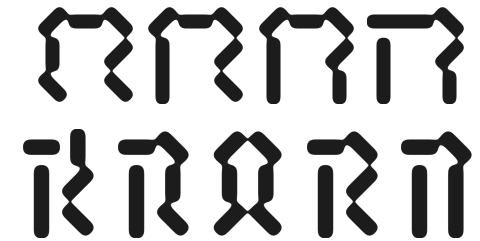
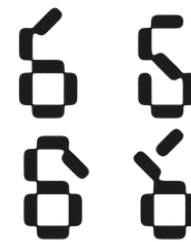
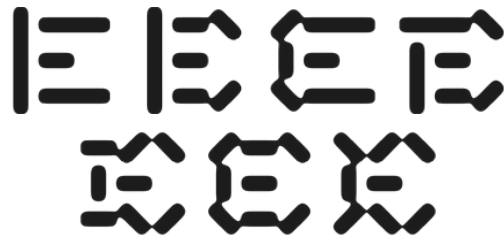
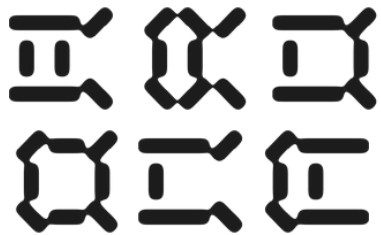
Studio Practice

A	α
[e]	['AlfE]

E	ε
[i]	['epsilEn]

S	δ
[εs]	['deltE]

R	π
[ar]	[pai]

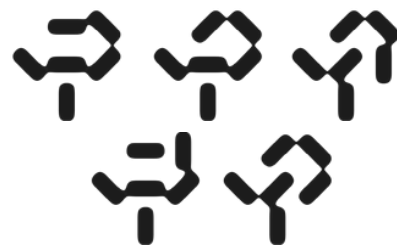
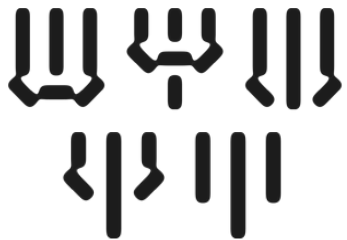


M	ψ
[εm]	[psai]

Y	φ
[wai]	[fai]

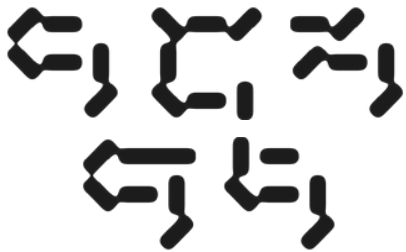
B	β
[bee]	['beita]

Z	γ
[zee]	['gæma]



Studio Practice

G [gee]
ζ ['zi:ta]



I [i]
η ['eɪta]



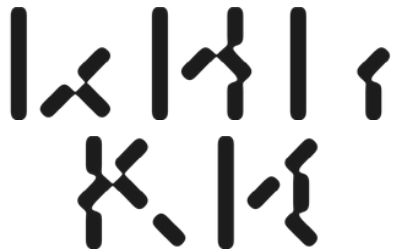
F [eff]
θ ['θɪta]



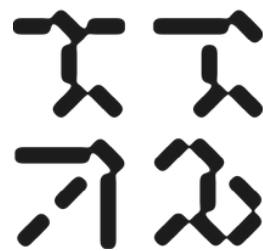
L [el]
ι [ai'outa]



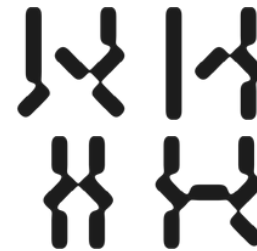
K [kay]
κ ['kæpa]



T [tee]
λ ['læmda]



H [aitch]
μ [mju:]



C [cee]
ξ [ksai]



Studio Practice

